



TROON CRUISING CLUB

WEDNESDAY WACKY

SAILING INSTRUCTIONS 2016



In order to take part in the Wednesday Wacky Series, competing Skippers confirm understanding of the Club Racing Standing Orders and agree to be bound by them.

Start Times

Start times for competing boats are as displayed on the club racing notice board. They may also be available on the club website. Note the start times will be updated at the end of each month (except April) so be sure to check for amended start times before the first race of each month!

Spinnakers

Kites may be used on this course but competing boats doing so must adopt a spinnaker handicap for the season. If a spinnaker is not denoted on the list of start times against your boat and you wish to fly one please contact a member of the race committee to address.

Notification of Entry

On exit from the harbour mouth please sail close to the dolphin and hail your boat's name to the OOD.

Harbour Movements

Whilst large vessels are manoeuvring into and around the harbour this will be signified by the Harbourmaster illuminating flashing yellows and static reds at the harbour entrance, and the OOD will also fly Flag X (white with blue cross).

During the time the lights are flashing boats shall not cross the harbour entrance or the prohibited area on the chart overleaf. Failure to do so could not only be very dangerous but could result in Skipper prosecution and suspension of club racing activities by the Harbourmaster.

Start / Finish Line

The Start and Finish will be on a line from the Dolphin at the harbour mouth, to the Mill Rock red buoy as identified on the starting area chart attached.

Course

No boat shall enter the area between the dolphin and the yellow outer harbour buoy at any point in the race.

The OOD will fly either a green flag to indicate a starboard rounding or a red flag for port rounding of the marks of the course.

Green Flag (all marks left to starboard) - From the START proceed to Lappock Rock, then to Beechams, then to Gailles, finally proceed back to the FINISH.

Red Flag (all marks left to port) - From the START proceed to Gailles, then to Beechams, then to Lappock Rock, finally proceed back to the FINISH.

SPECIAL NOTE - THERE MAY NOT BE SUFFICIENT WATER DEPTH FOR YOUR BOAT IN A DIRECT LINE BETWEEN MILL ROCK BUOY AND GAILLES BUOY SO YOU SHOULD SAIL ACCORDINGLY.



TROON CRUISING CLUB
WEDNESDAY WACKY
SAILING INSTRUCTIONS 2016



Finish Time

If there is no OOD present when you cross the line please note your finish time on GPS and record it on the notice board in the clubhouse.

Time Limit

All racing will cease at 21:00.

VHF Channel

A listening watch should be kept on VHF Channel 14 (Troon Harbour).

Prizes

A monthly medal will be awarded to the winning yacht determined on the Low Point System allowing for one discard per month.

Jonathan Dickie - Hon Racing Secretary
March 2016

AMENDMENT 1

Please note that at the time of writing (08/04/2016) Mill Rock Buoy remains off station for maintenance.

IN THE EVENT THAT THE MILL ROCK BUOY IS NOT ON STATION THE START AND FINISH LINE WILL BE ON A LINE FROM THE DOLPHIN AT THE HARBOUR MOUTH, TO THE OUTERMOST FERRY CHANNEL MARKER (ROUND INFLATABLE).

All other instructions remain unchanged. No boat shall enter the area between the dolphin and the yellow outer harbour buoy at any point in the race.



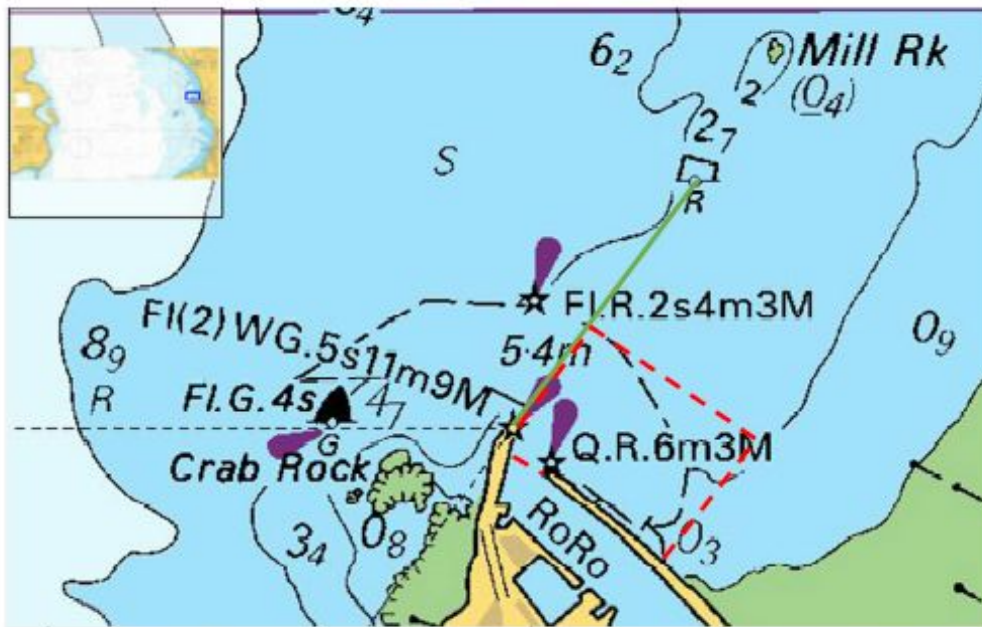
TROON CRUISING CLUB

WEDNESDAY WACKY

SAILING INSTRUCTIONS 2016



TCC Racing – Starting Area



— START LINE - - - - PROHIBITED AREA DURING HARBOUR MOVEMENTS

